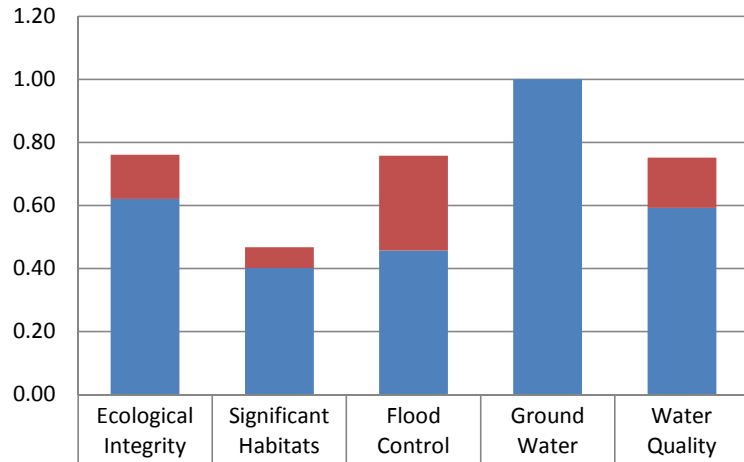


Appendix F

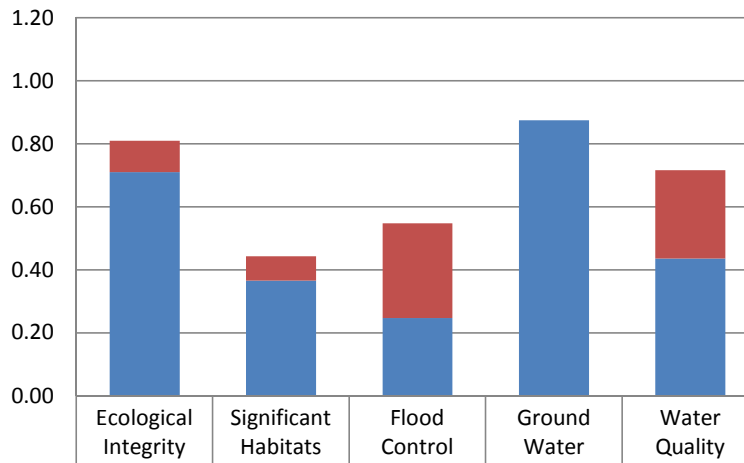
Functional Benefit Scores for Example Sites

Site #5, Jericho Road



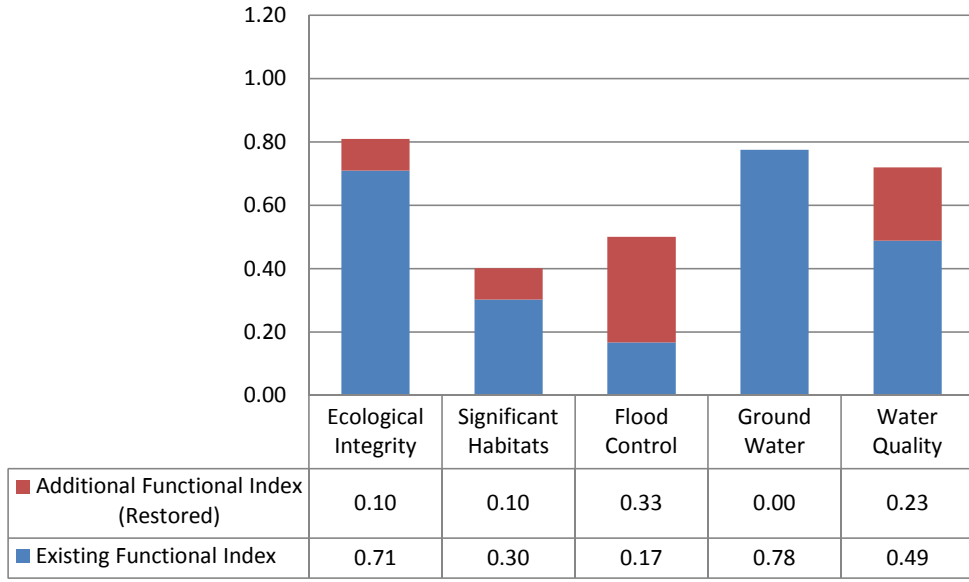
■ Additional Functional Index (Restored)	0.14	0.07	0.30	0.00	0.16
■ Existing Functional Index	0.62	0.40	0.46	1.00	0.59

Site #6, Beaver Brook Tributary

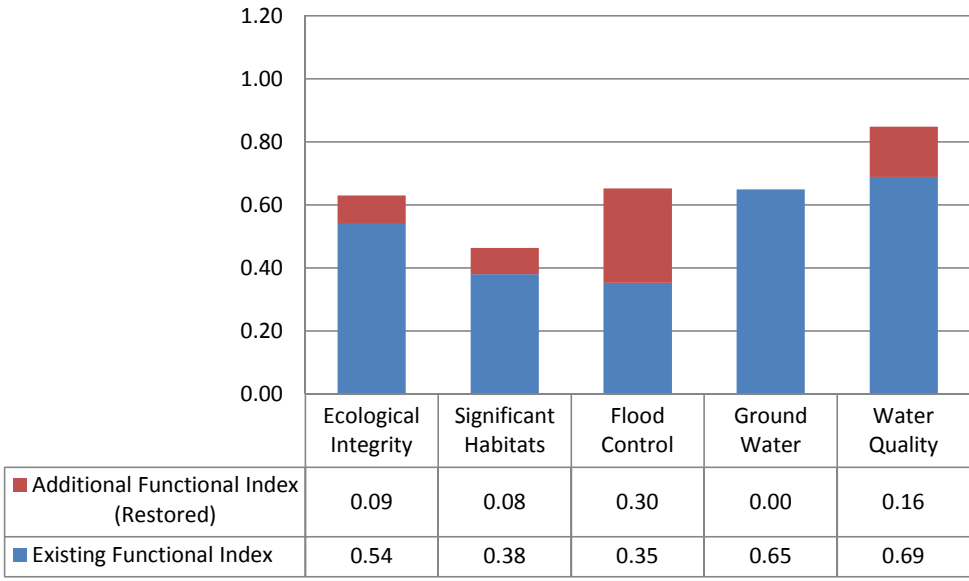


■ Additional Functional Index (Restored)	0.10	0.08	0.30	0.00	0.28
■ Existing Functional Index	0.71	0.37	0.25	0.88	0.44

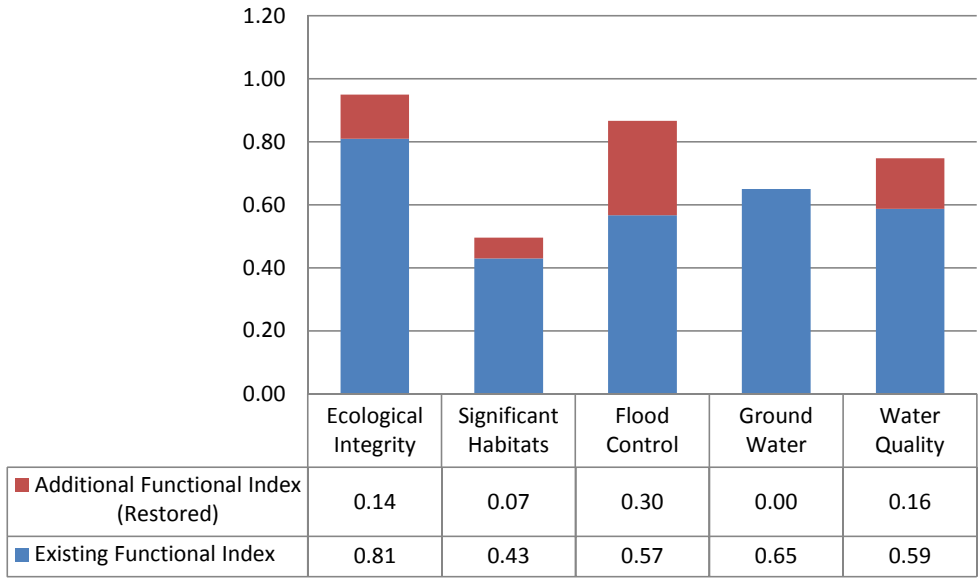
Site # 76, Tributary to Harris Brook



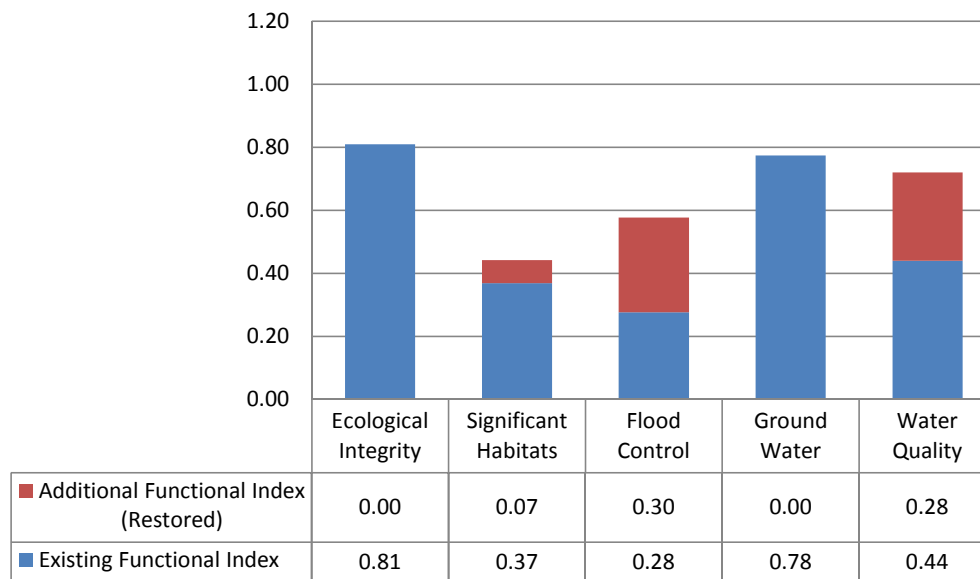
Site #71, Salmon Brook



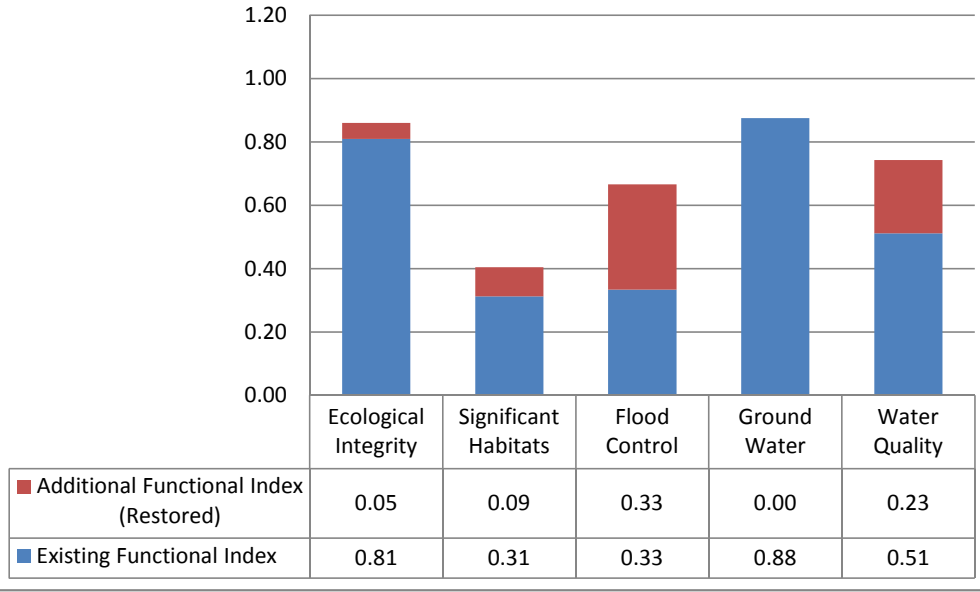
Site #52, Musquash Brook Headwaters



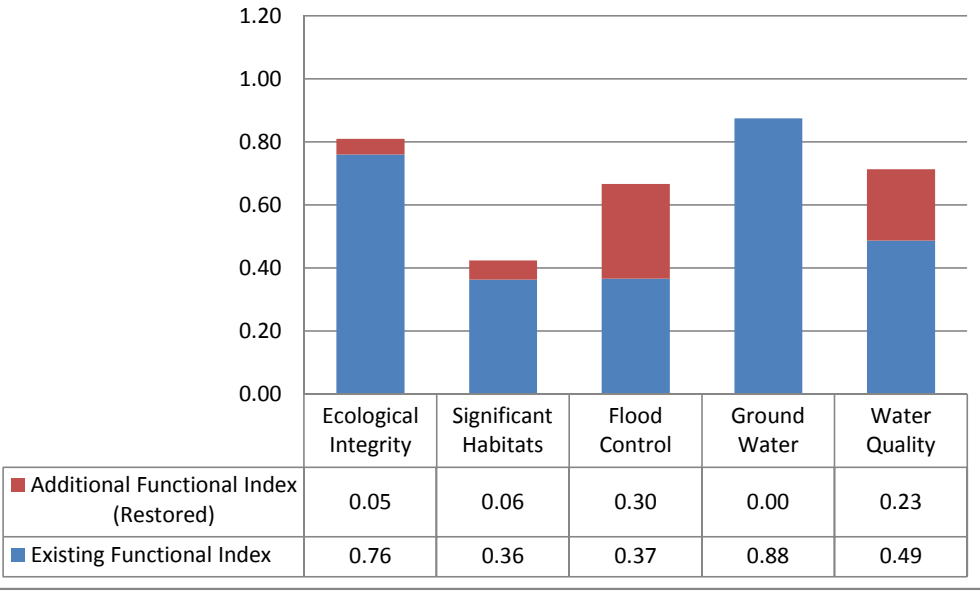
Site #67, Second Brook Swamp



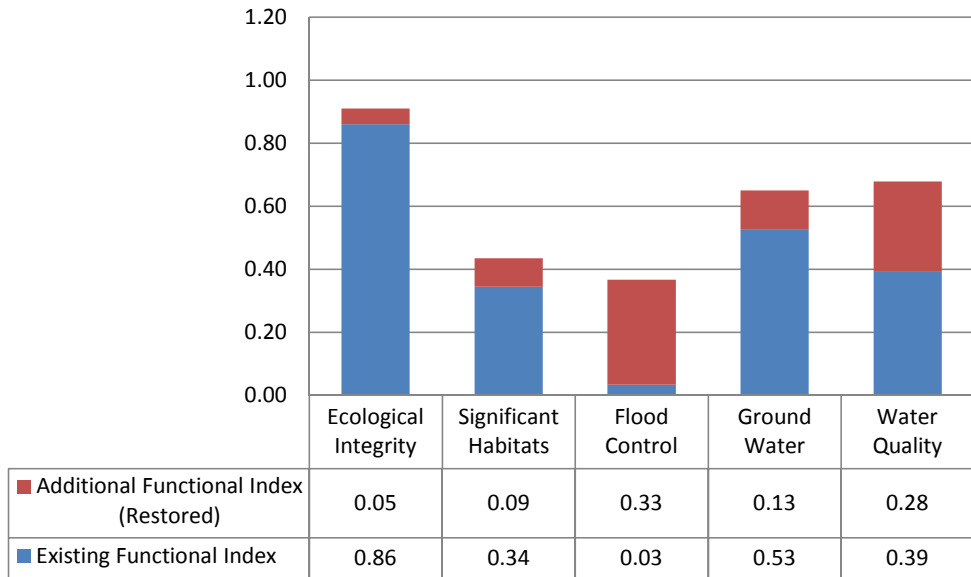
Site # 81, Porcupine Brook Tributary



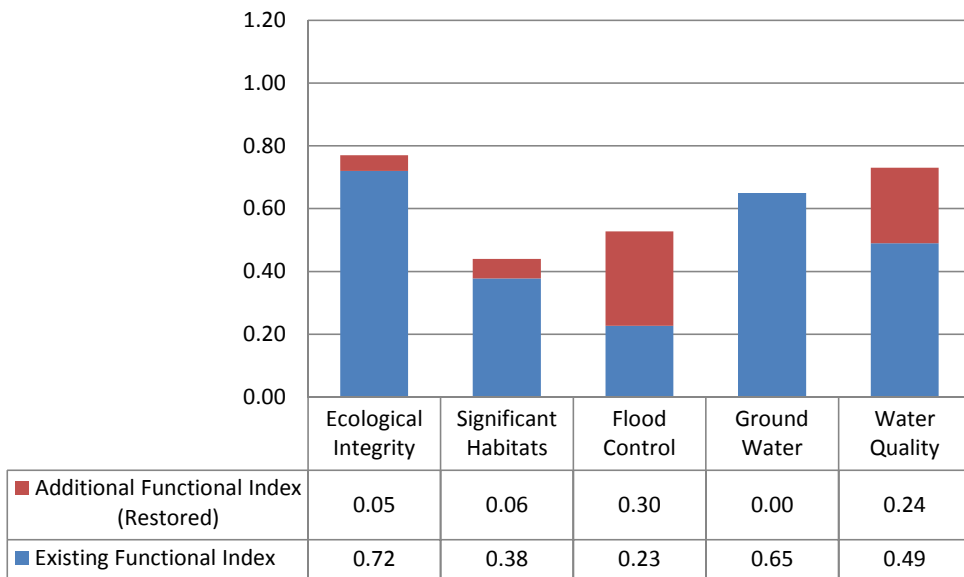
Site #134, Farmed Wetland



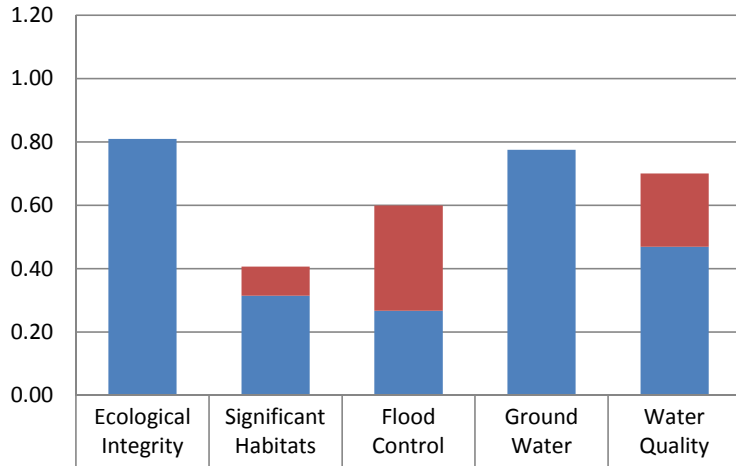
Site # 218, Nesenkeag Brook Headwaters



ID #231, Hartshorn Brook, Joslin Road

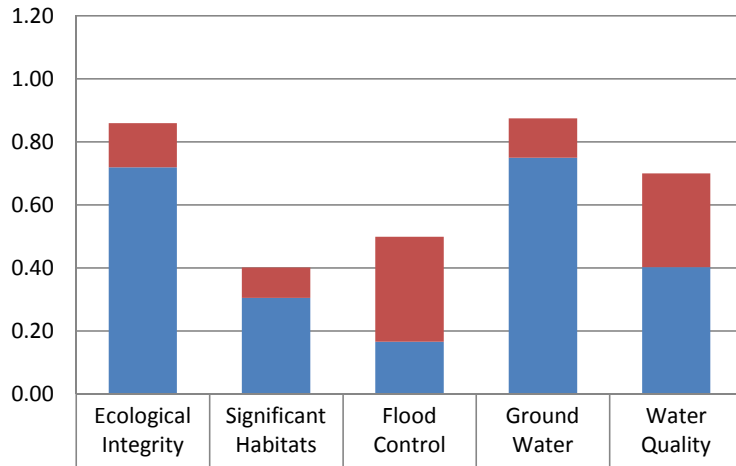


Site # 348, Hog Hill Swamp



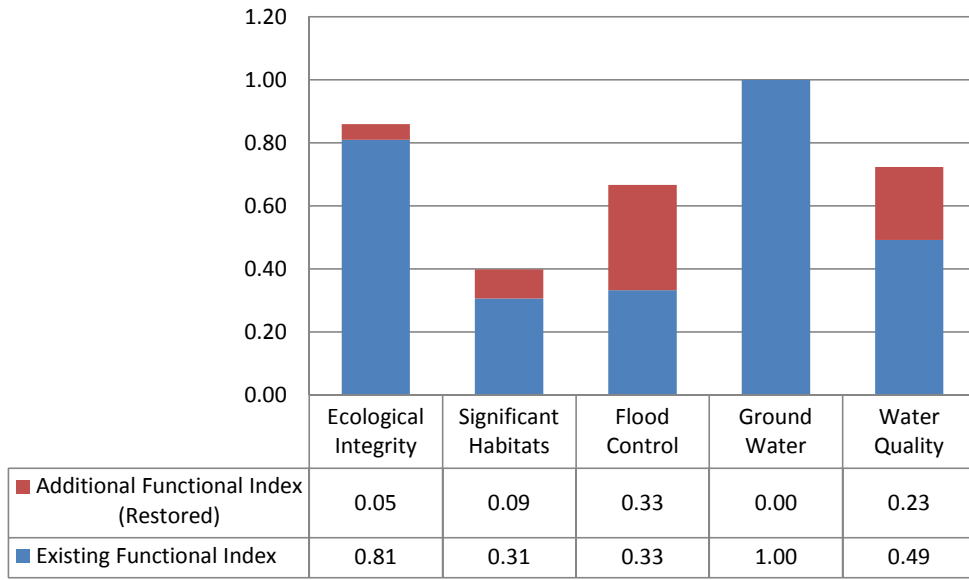
■ Additional Functional Index (Restored)	0.00	0.09	0.33	0.00	0.23
■ Existing Functional Index	0.81	0.31	0.27	0.78	0.47

Site # 366, Beaver Brook Headwaters

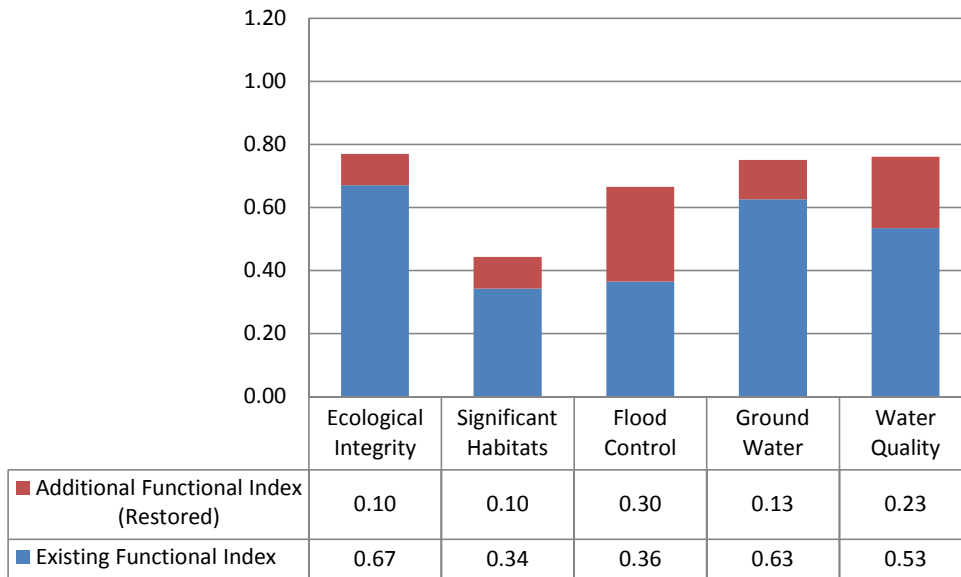


■ Additional Functional Index (Restored)	0.14	0.10	0.33	0.13	0.30
■ Existing Functional Index	0.72	0.31	0.17	0.75	0.40

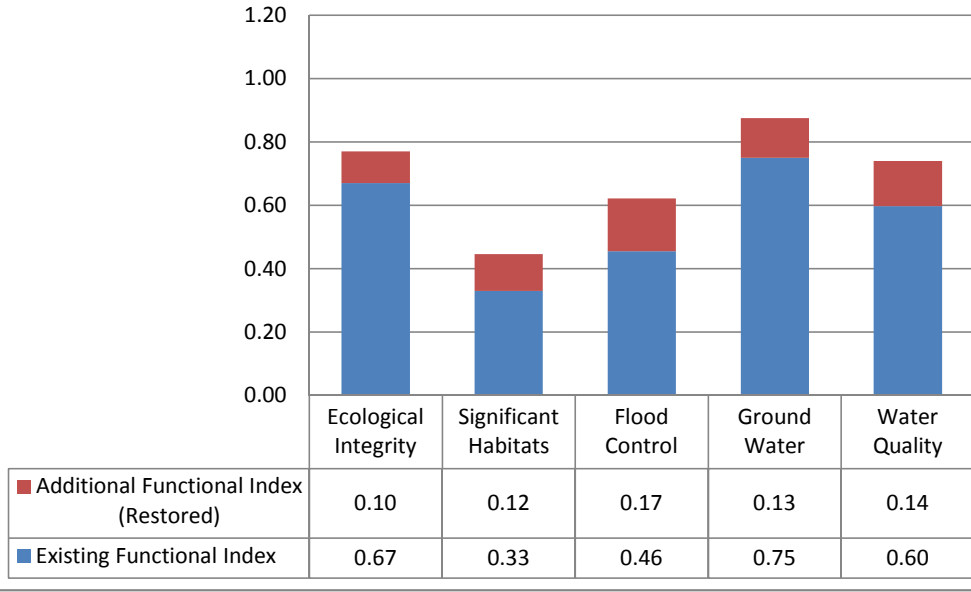
Site #278, Farmed Wetland



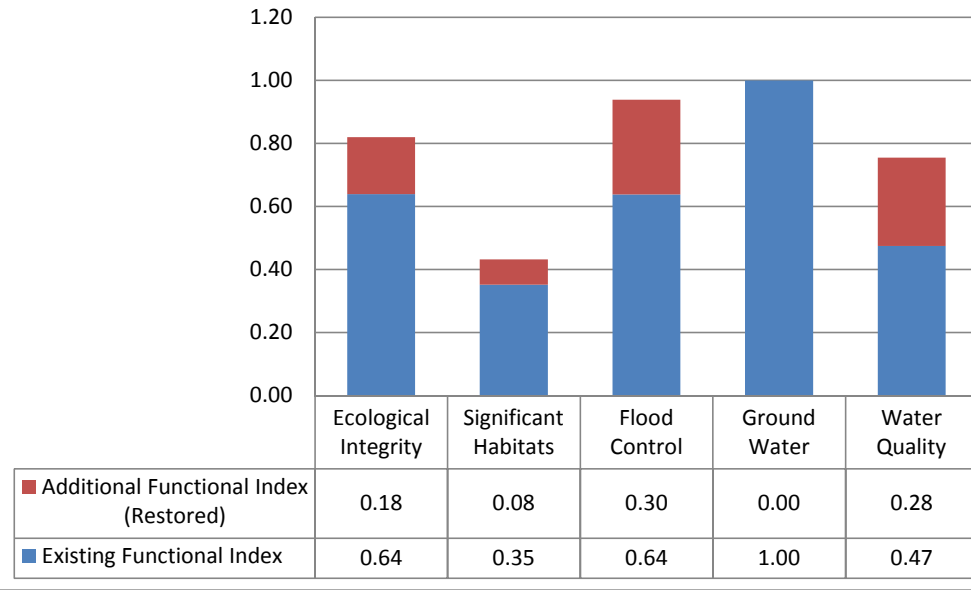
Site # 295, Hoodkroft



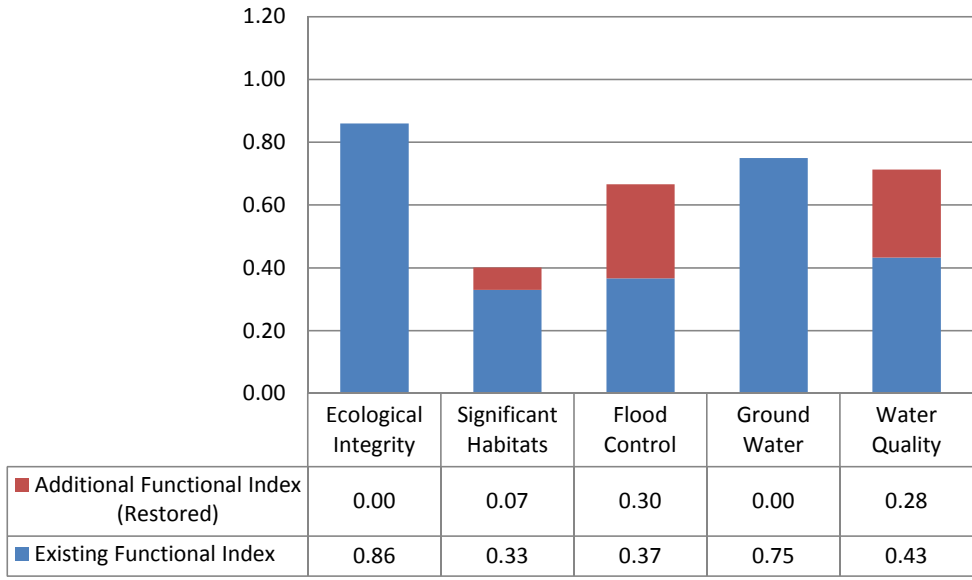
Site #378, Riddle Brook Wetlands



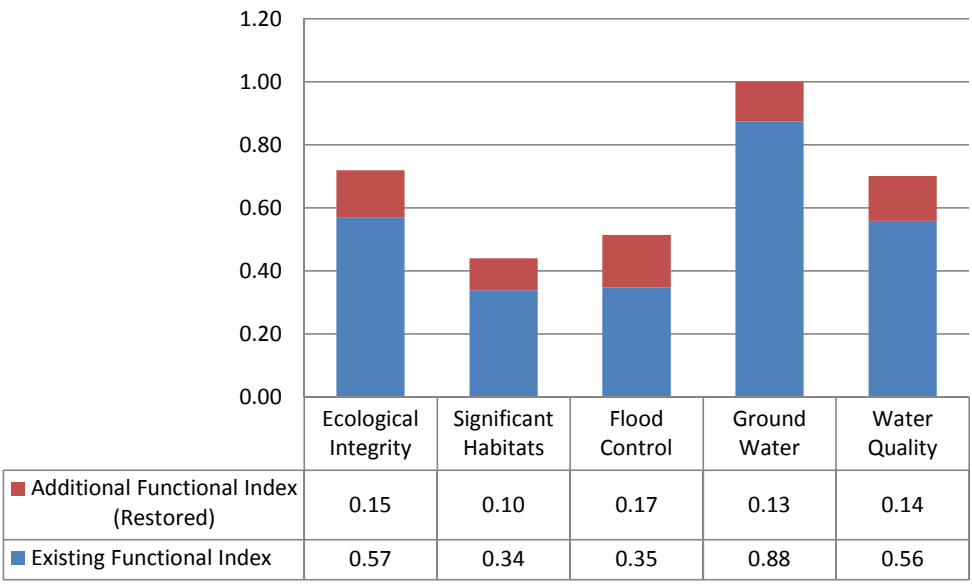
Site #530, Piscataquog River



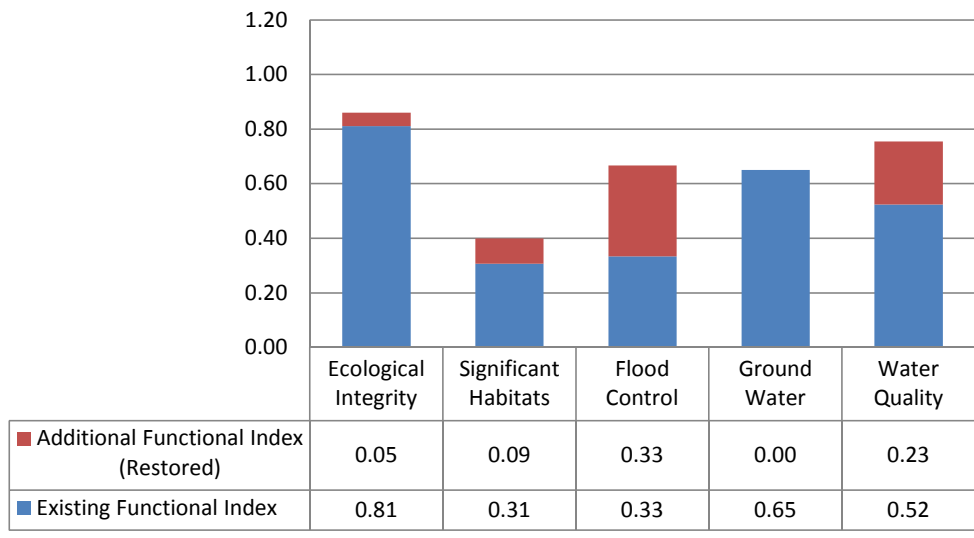
Site #371, McQuade Brook



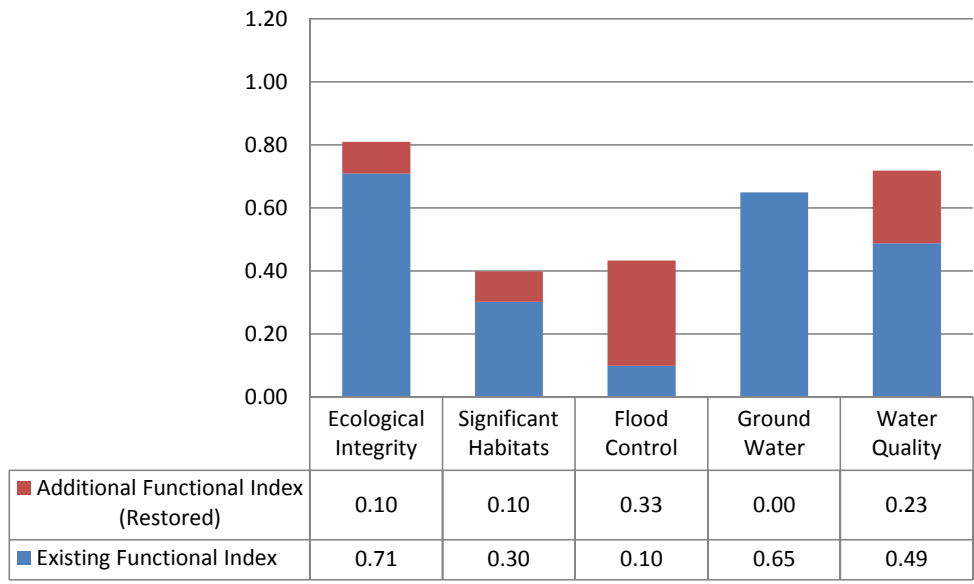
Site #376, McQuade Brook



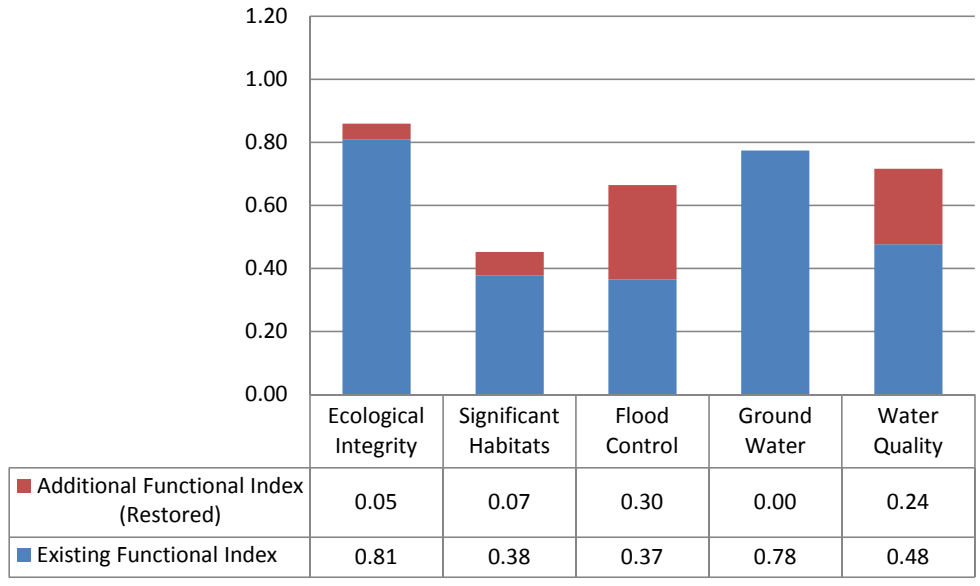
Site #671, Turkey River Floodplain, White Farm



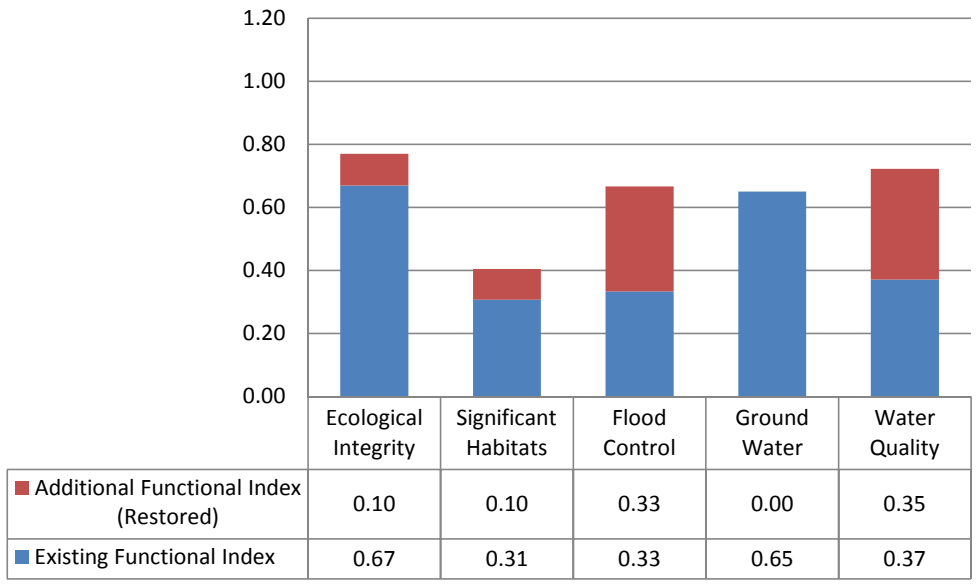
Site #672, White Farm



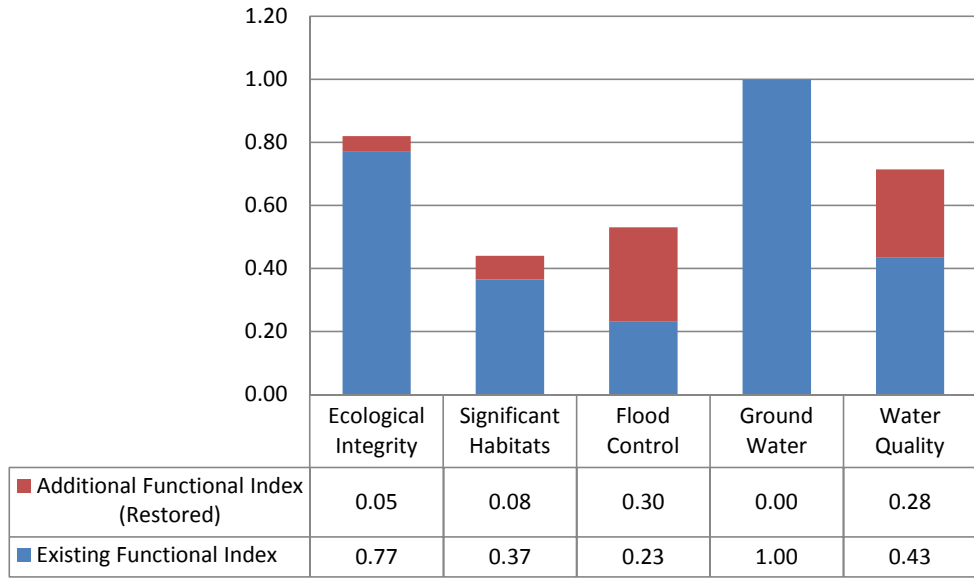
Site #578, Kimball Pond Road Bog



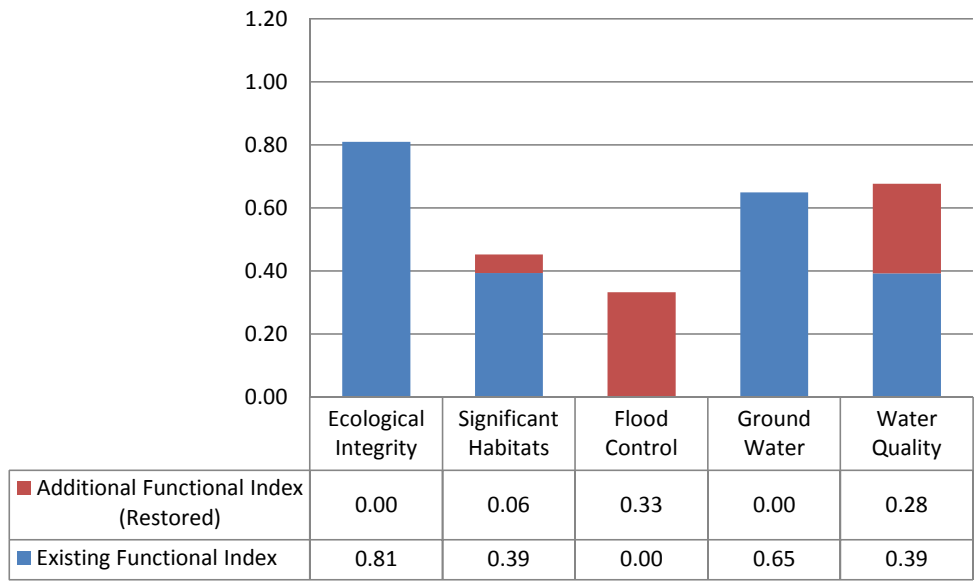
Site #666, Turkey River Floodplain



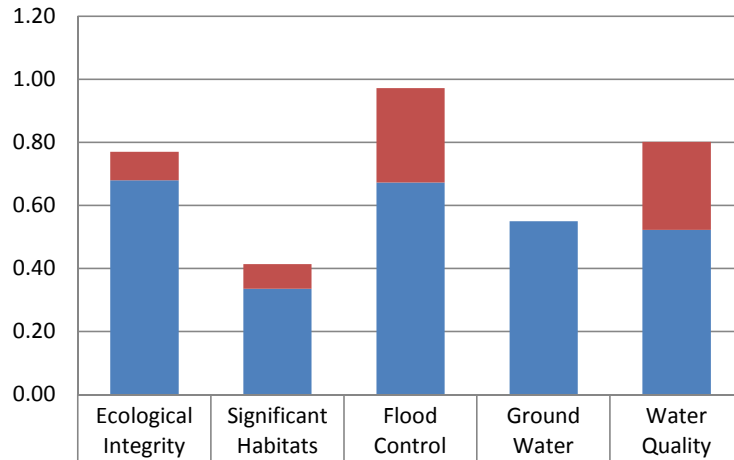
Site #689, Burnham Brook Farmed Wetlands



Site#704, Bowen Brook

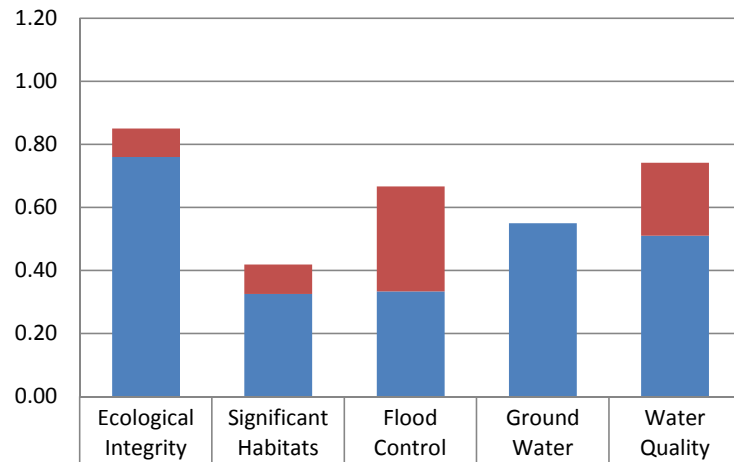


Site #705, State Prison Farm



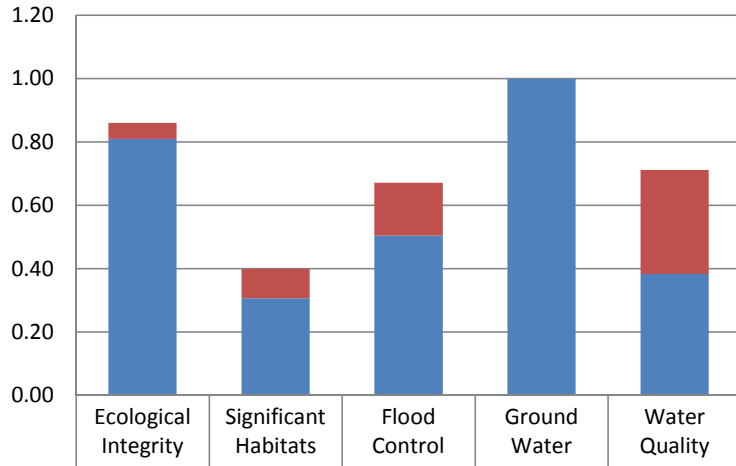
■ Additional Functional Index (Restored)	0.09	0.08	0.30	0.00	0.28
■ Existing Functional Index	0.68	0.34	0.67	0.55	0.52

Site #733, Gulf Brook Tributary



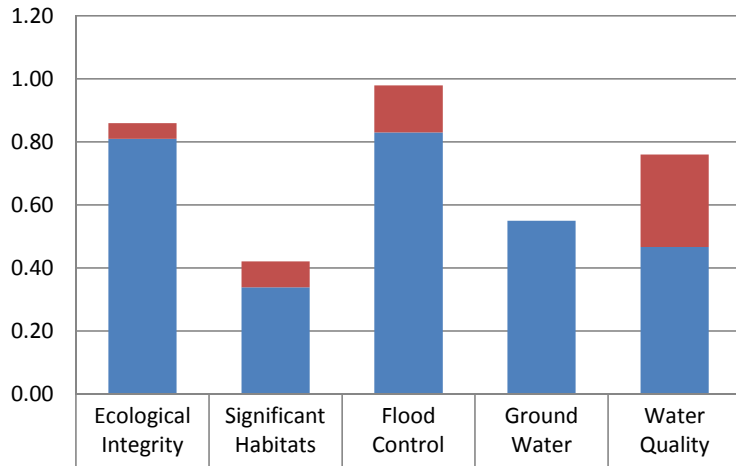
■ Additional Functional Index (Restored)	0.09	0.09	0.33	0.00	0.23
■ Existing Functional Index	0.76	0.32	0.33	0.55	0.51

Site # 769, Hunting Swamp



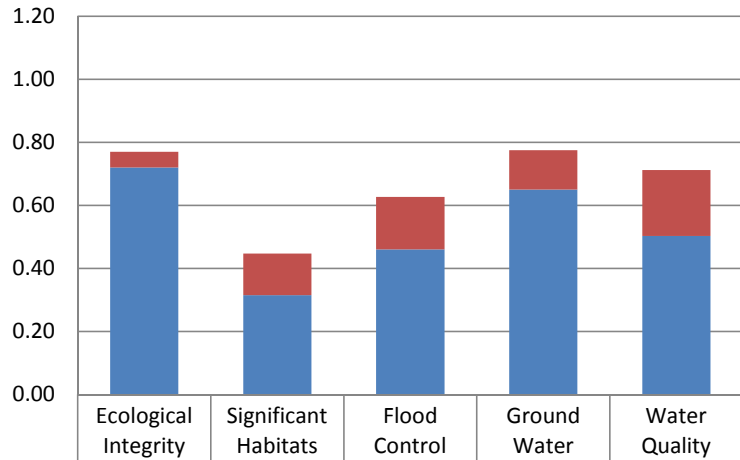
■ Additional Functional Index (Restored)	0.05	0.09	0.17	0.00	0.33
■ Existing Functional Index	0.81	0.31	0.50	1.00	0.38

Site #800/804, Gold Star Sod Farms



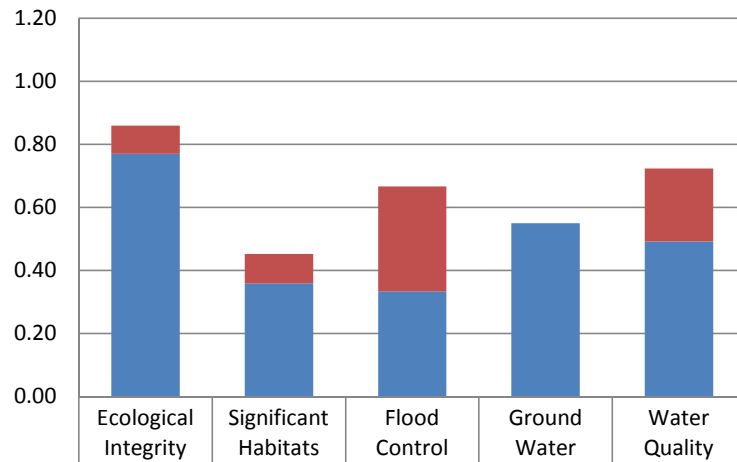
■ Additional Functional Index (Restored)	0.05	0.08	0.15	0.00	0.29
■ Existing Functional Index	0.81	0.34	0.83	0.55	0.47

Site # 806, Tannery Brook



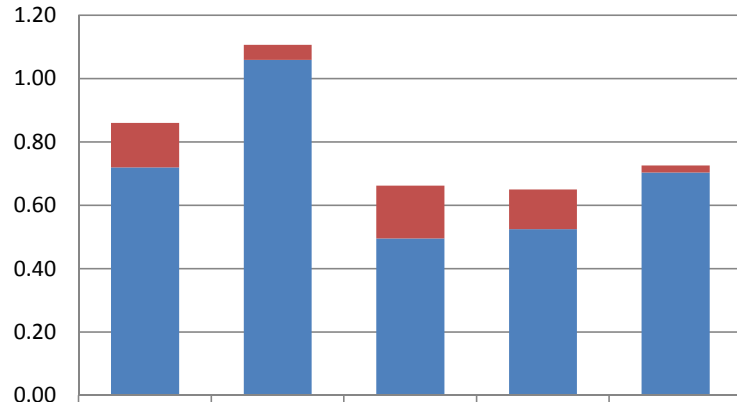
■ Additional Functional Index (Restored)	0.05	0.13	0.17	0.13	0.21
■ Existing Functional Index	0.72	0.31	0.46	0.65	0.50

Site # 825/826, Kelley Brook Tributary



■ Additional Functional Index (Restored)	0.09	0.09	0.33	0.00	0.23
■ Existing Functional Index	0.77	0.36	0.33	0.55	0.49

Site #1010, Lower Shield Pond



	Ecological Integrity	Significant Habitats	Flood Control	Ground Water	Water Quality
■ Additional Functional Index (Restored)	0.14	0.05	0.17	0.13	0.02
■ Existing Functional Index	0.72	1.06	0.50	0.53	0.70