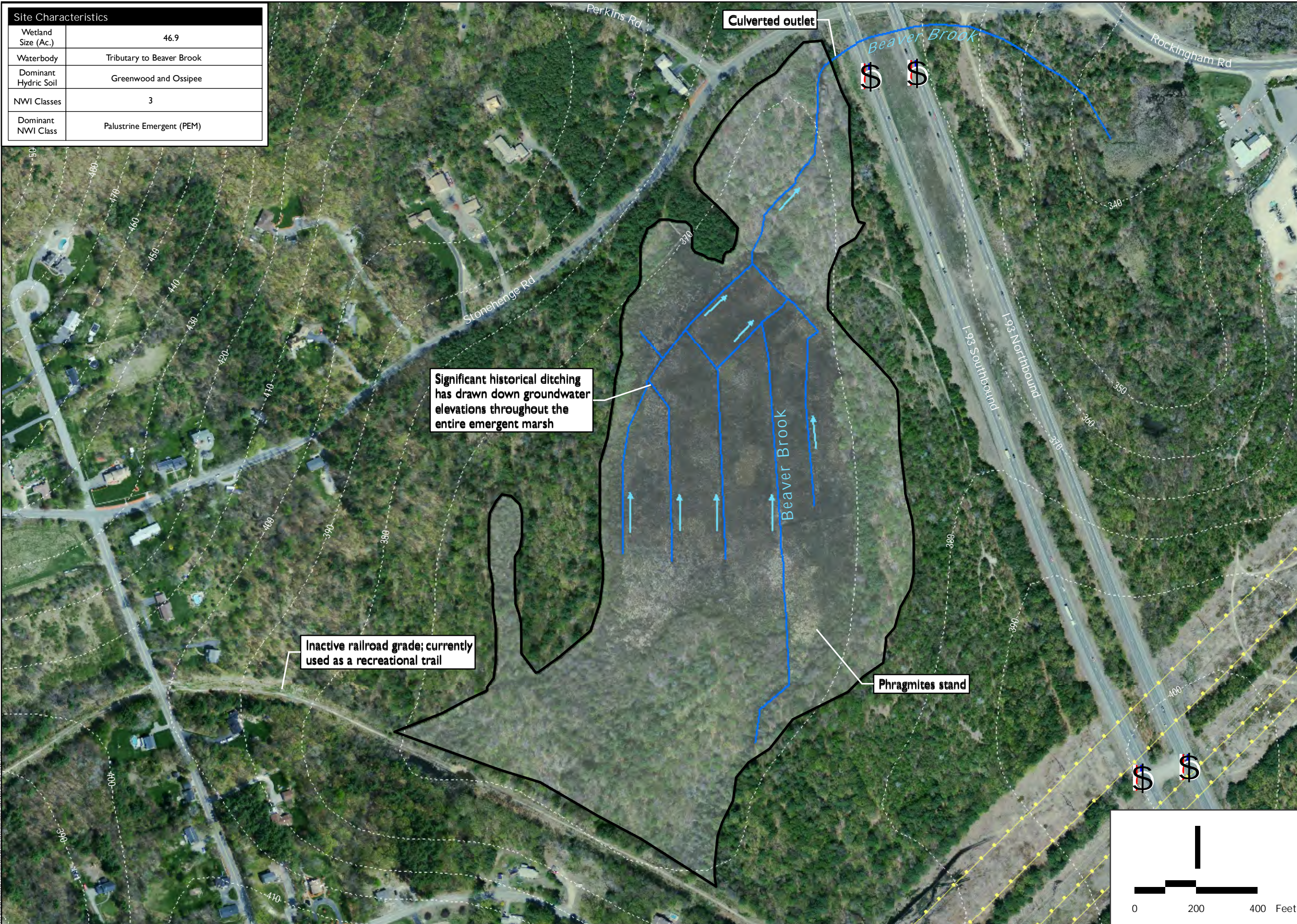


Site Characteristics	
Wetland Size (Ac.)	46.9
Waterbody	Tributary to Beaver Brook
Dominant Hydric Soil	Greenwood and Ossipee
NWI Classes	3
Dominant NWI Class	Palustrine Emergent (PEM)



Existing Conditions

Candidate Site 366
 Beaver Brook Headwaters
 Londonderry, NH
 Merrimack River Watershed
 Wetland Restoration Strategy

Legend

- Approximate Wetland Boundary
- Prime Wetland Boundary (NHDES)
- Direction of Surface Flow
- 10' Contours
- Permanent Conservation Land
- Unofficial Conservation/Public Land - (Level 2, 2A, 3, 4, 9)
- River/Stream
- Lake/Pond
- Railroad
- Pipeline
- Overhead Electrical Line
- Parcel Boundary (where available)
- Municipal Boundary

Notes:
 Wetland boundaries depicted on this plan are based on field review of aerial photography as well as published soil and NWI data and should be regarded as approximate. Field delineation is recommended prior to any restoration planning effort.

Codes such as "PUBHh," "PFO1," etc. refer to the Cowardin et al. (1979) US Fish and Wildlife Service wetland classification system. For more information, refer to the project technical report or to the online publication at http://www.fws.gov/nwi/Pubs_Reports/Class_Manual/class_titlepg.htm

Data Sources:
 Base features (roads, railroads, hydrology, pipelines, and utilities) taken from the archives of NHGRANIT. 2005/2006 aerial photography provided by NHDOT. Boundaries for streams and ponds adjusted to aerial photography. 10' contour intervals generated from USGS DEM



