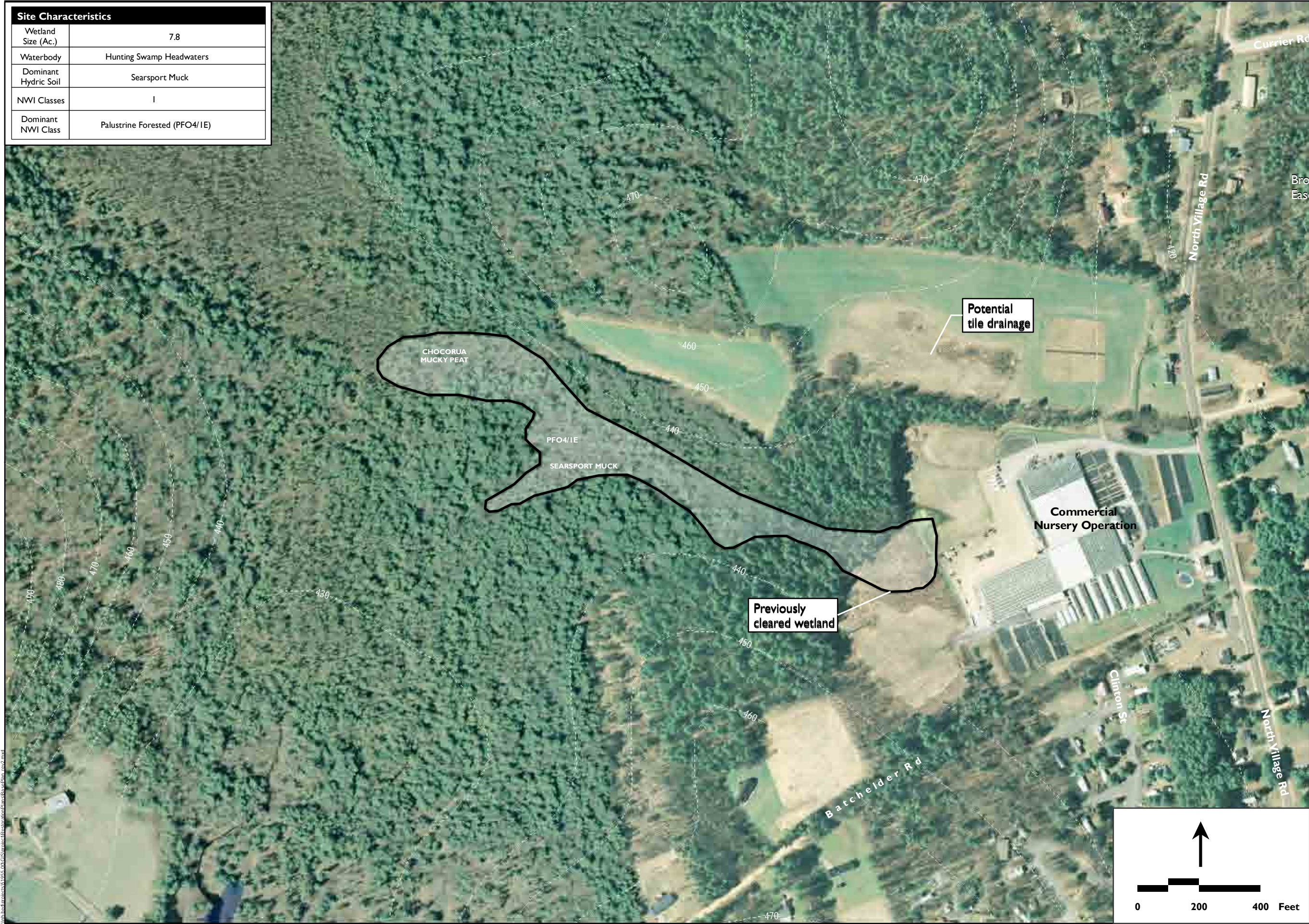


Site Characteristics	
Wetland Size (Ac.)	7.8
Waterbody	Hunting Swamp Headwaters
Dominant Hydric Soil	Searsport Muck
NWI Classes	I
Dominant NWI Class	Palustrine Forested (PFO4/1E)





Existing Conditions

Candidate Site 769
Hunting Swamp Headwaters
Loudon, NH

Merrimack River Watershed
 Wetland Restoration Strategy

Legend

-  **Approximate Wetland Boundary**
-  **Prime Wetland Boundary (NHDES)**
-  **Direction of Surface Flow**
-  **10' Contours**
-  **Permanent Conservation Land**
-  **Unofficial Conservation/Public Land - (Level 2, 2A, 3, 4, 9)**
-  **River/Stream**
-  **Lake/Pond**
-  **Railroad**
-  **Pipeline**
-  **Overhead Electrical Line**
-  **Parcel Boundary (where available)**
-  **Municipal Boundary**

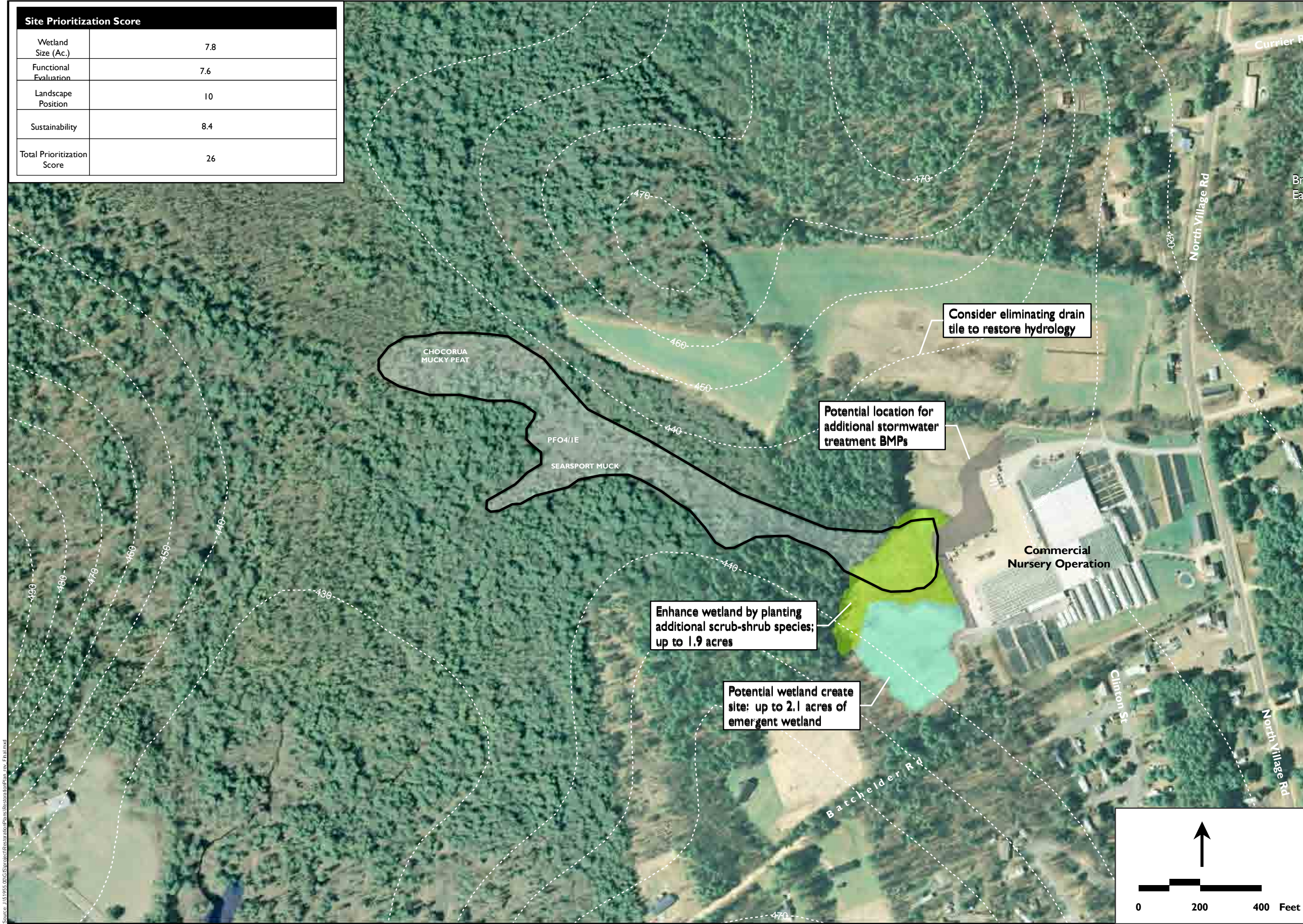
Notes:
 Wetland boundaries depicted on this plan are based on field review of aerial photography as well as published soil and NWI data and should be regarded as approximate. Field delineation is recommended prior to any restoration planning effort.

Codes such as "PUBHh," "PFO1," etc. refer to the Cowardin et al. (1979) US Fish and Wildlife Service wetland classification system. For more information, refer to the project technical report or to the online publication at http://www.fws.gov/nwi/Pubs_Reports/Class_Manual/class_titlepg.htm

Data Sources:
 Base features (roads, railroads, hydrology, pipelines, and utilities) taken from the archives of NHGRANIT. 2005/2006 aerial photography provided by NHDOT. Boundaries for streams and ponds adjusted to aerial photography. 10' contour intervals generated from USGS DEM



Site Prioritization Score	
Wetland Size (Ac.)	7.8
Functional Evaluation	7.6
Landscape Position	10
Sustainability	8.4
Total Prioritization Score	26



Conceptual Restoration Plan

Candidate Site 769
Hunting Swamp Headwaters
Loudon, NH

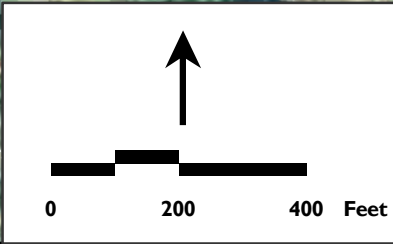
Merrimack River Watershed
 Wetland Restoration Strategy

Legend

- Approximate Wetland Boundary
- Restoration Target Cover Types**
- Emergent Deep Marsh
- Emergent-Wet Meadow
- Forested Wetland/Floodplain
- Mixed (Scrub-shrub/Wet Meadow)
- Open Water/Aquatic Bed
- Scrub-Shrub
- Stream/River Bank/Riparian
- Upland Buffer (Forested/Shrub)
- Swale
- BMP Improvements
- Habitat Protection
- Potential Conservation Easement
- Ditch plug (To be installed)
- Stream Restoration
- Direction of Surface Flow
- 10' Contours
- Permanent Conservation Land
- Public Property/Open Space
- River/Stream
- Lake/Pond
- Railroad
- Pipeline
- Overhead Electrical Line
- Parcel Boundary (where available)
- Municipal Boundary

Note: Wetland boundaries depicted on this plan are based on field review of aerial photography as well as published soil and NWI data and should be regarded as approximate. Field delineation is recommended prior to any restoration planning effort.

Data Sources: Base features (roads, railroads, hydrology, NHGRANIT, 2005/2006 aerial photography provided by NHDOT. Boundaries for streams and ponds adjusted to aerial photography. 10' contour intervals generated from USGS DEM data. Parcel data provided by the Regional Planning Commissions and municipalities where available.



Source: J:\5195_00GIS\Projects\RestorationPlans\Design\Map\Map_4.mxd